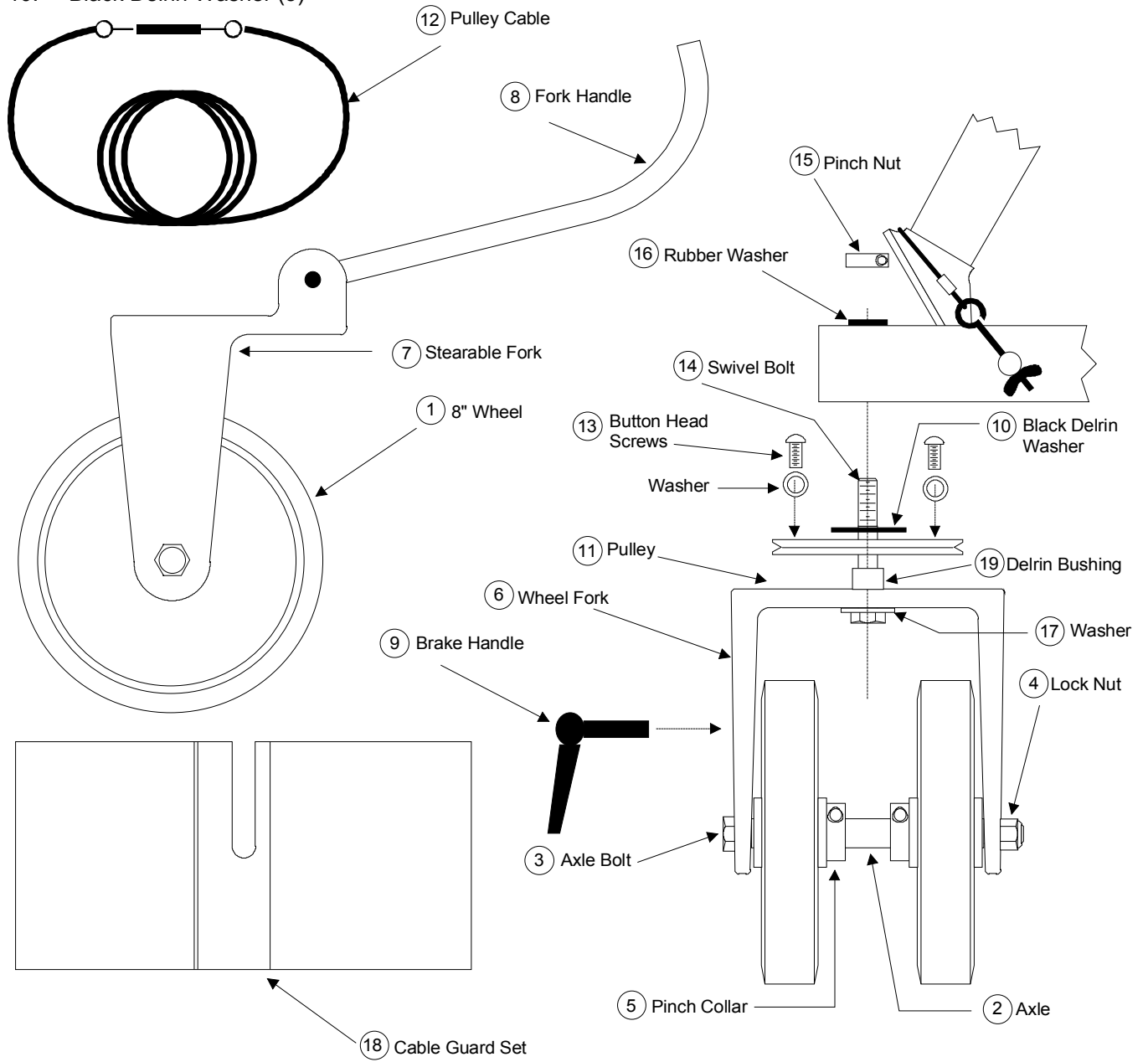


STANTON CRAB DOLLY

FEB94

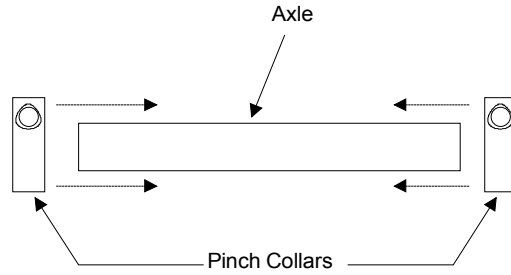
If you are missing any of the following items, please contact Stanton Video immediately (602) 493 9505

- | | |
|-----------------------------|----------------------------|
| 1. 8" Wheels (6) | 11. Pulleys (3) |
| 2. Axle (3) | 12. Pulley Cable (1) |
| 3. Axle Bolt (3) | 13. Button Head Screws (6) |
| 4. Lock Nuts (3) | 14. Swivel Bolt (3) |
| 5. Pinch Collars (6) | 15. Pinch Nuts (3) |
| 6. Wheel Fork (2) | 16. Rubber Washer (3) |
| 7. Stearable Fork (1) | 17. Washer (3) |
| 8. Fork Handle (1) | 18. Cable Guard Sets (3) |
| 9. Brake Handle (3) | 19. Delrin Bushing (2) |
| 10. Black Delrin Washer (3) | |

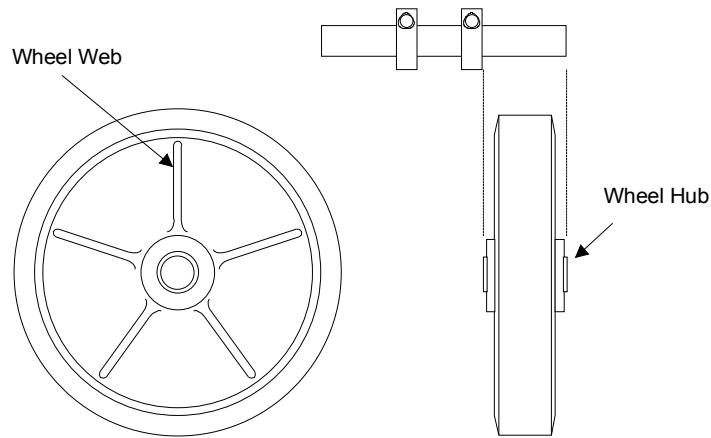


WHEEL ASSEMBLY

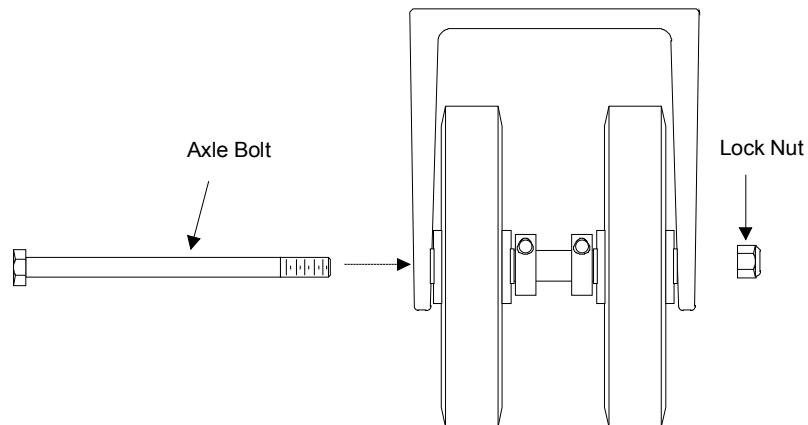
1. Slide the Pinch Collars onto the Axle.



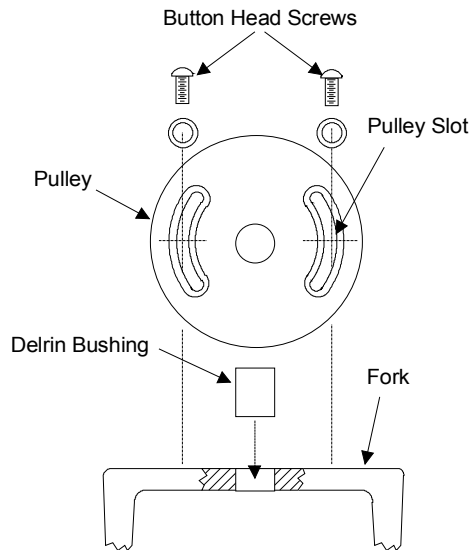
2. Adjust the Collars so that when the wheels are installed the wheel hub will stick out slightly beyond the axle (about 1/64 in.). This will take the "slop" out of the bearings when the Axle Bolt is tightened.
3. Make sure the Collars are tight, and slide on the Wheels. Also, the **Wheel Webs must be faced inward** otherwise they will interfere with the brake.



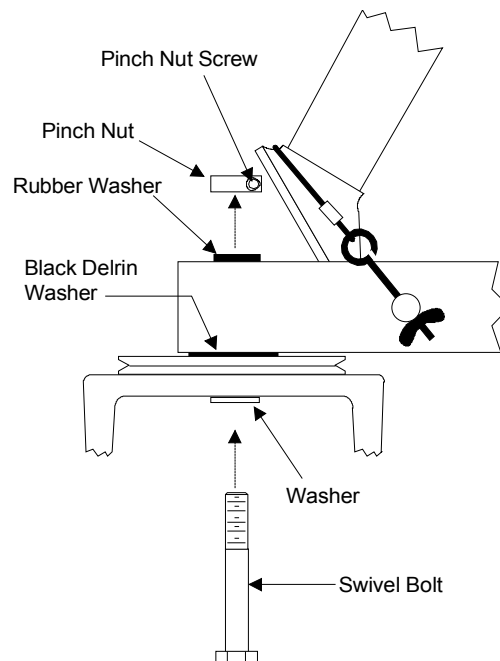
4. Insert the Wheels and Axle between the Forks and secure with the Axle Bolt.



5. Press the Delrin Bushing into the Fork (this bushing may already be installed). The bushing should be flush with the bottom surface.
6. Mount the Pulley using the Delrin Bushing as a guide and fasten in place with the Button Head Screws. The screws should be centered in the Pulley Slots.

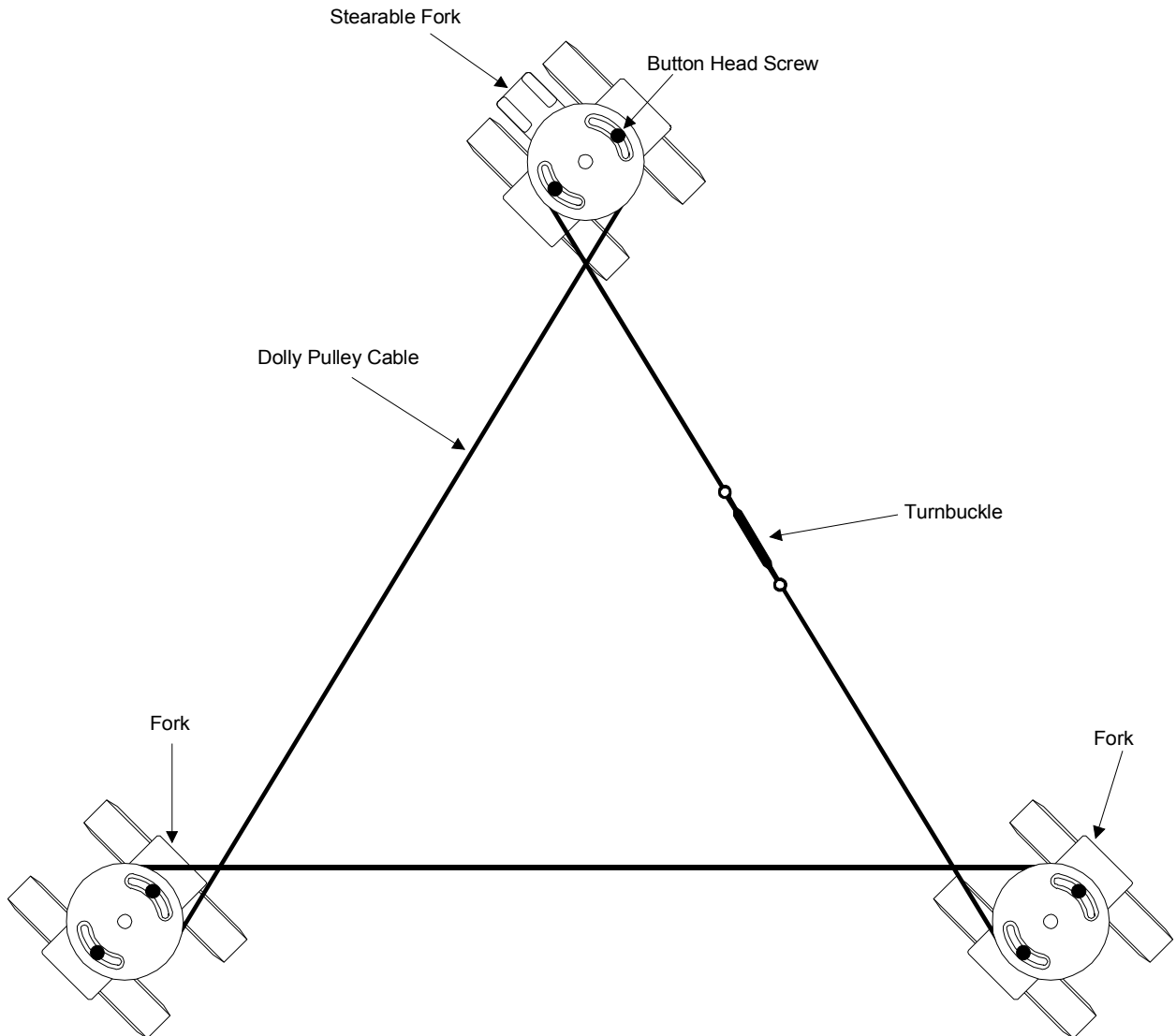


7. Install Fork to Dolly Tube using the Swivel Bolt. The Steerable Fork can be placed in any of the three wheel locations.
8. Tighten the Pinch Nut against the Rubber Washer. This washer locks the Swivel Bolt to the Dolly Tube and prevents the bolt from turning when the wheels are "crabbed".
9. Tighten the Pinch Nut Screw. This screw **Must Be Tightened**, otherwise the Swivel Bolt may unscrew when the wheels are turned.



CABLE ASSEMBLY

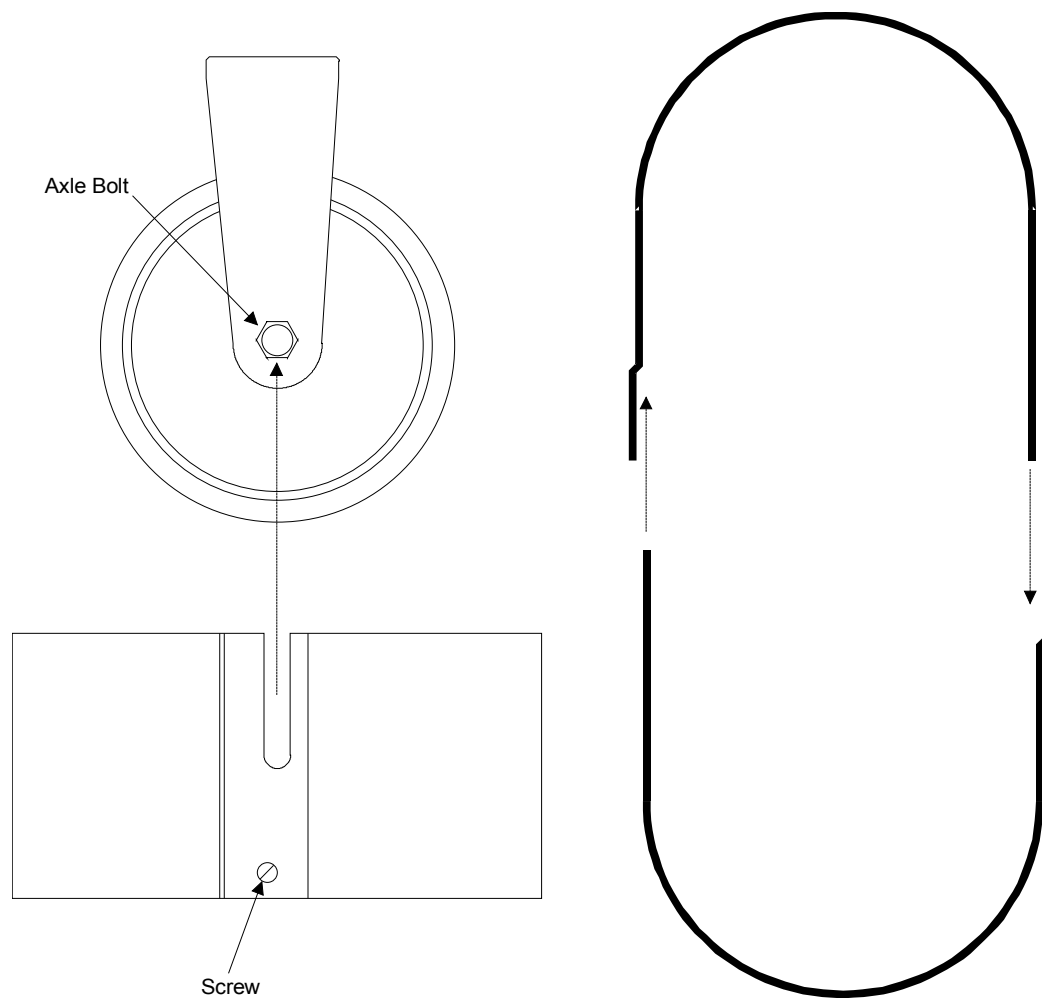
1. Align the Dolly Wheels.
2. String the Pulley Cable as shown in the drawing.
3. Tighten the Turnbuckle. This will probably cause the wheels to become misaligned.
4. By loosening the Button Head Screws the wheels can now be realigned.



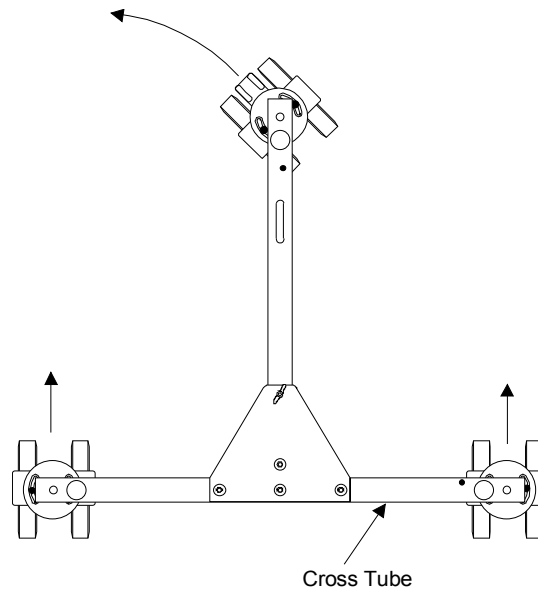
CABLE GUARDS

1. The Cable Guards should be installed before the Jib is installed onto the Dolly
2. Attach each Cable Guard set by fastening the two halves together with the screw and nut provided.
3. Loosen the axle bolt and slide the guards onto the bolt.
4. Adjust the Cable Guards high enough to miss any cracks or uneven areas in the floor. Make sure the are guards are low enough to catch the smallest cable.

WARNING -- Improper adjustment of the Cable Guards could result in either missing a cable or running a guard into an uneven floor tile or some other imperfection in the dolly runway. This could result is upsetting the entire Jib Arm.



SINGLE WHEEL STEERING



If you want to maneuver the Dolly by steering with the leading wheel it will be necessary to lock the two back wheels. This is accomplished by inserting two screws into the pulley which locks the pulley to the cross tube.

